

THE CEDAR HOME (WITH BONUS ROOM)

3-4 bed | 2-3 bath | 2 car | from \$264,780

Elko, NV - by Bailey Homes



MAIN LEVEL 1,430 SF



MAIN
BONUS
TOTAL

1,430 SF
400 SF
1,830 SF
\$264,780

Bailey Homes
NV Lic 80318

775-777-7773
info@newhomeselko.com

780 W. Silver St. #104
Elko, NV 89801

Mon-Fri 8:30am-5:00pm
Sat-Sun BY APPOINTMENT



THE CEDAR HOME (WITH BONUS ROOM)

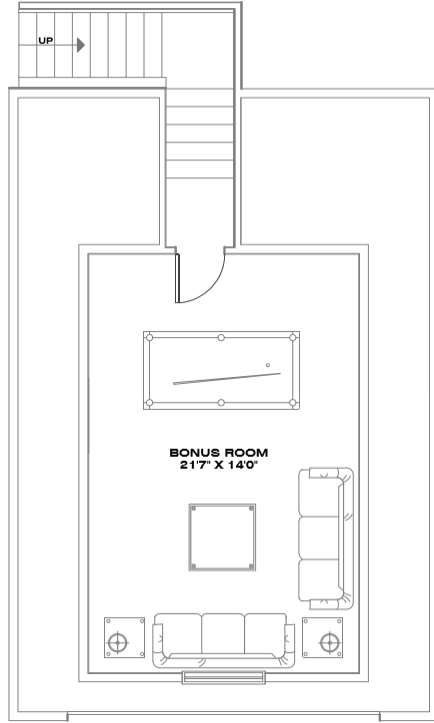
3-4 bed | 2-3 bath | 2 car | from \$264,780

Elko, NV - by Bailey Homes



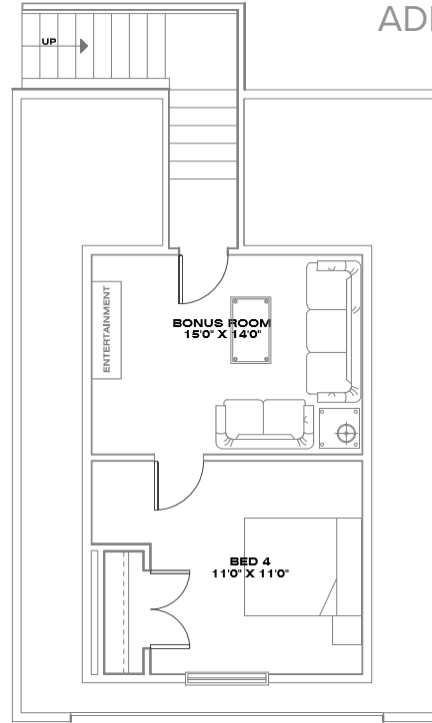
BONUS LEVEL 400 SF

STANDARD



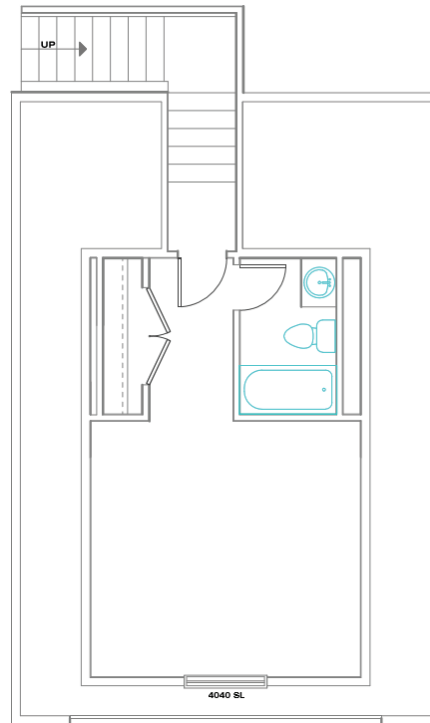
BEDROOM OPTION

ADD \$450



BEDROOM / BATH OPTION

ADD \$6,500



MAIN
BONUS
TOTAL

1,430 SF

400 SF

1,830 SF

\$264,780

Bailey Homes
NV Lic 80318



775-777-7773
info@newhomeselko.com



780 W. Silver St. #104
Elko, NV 89801



Mon-Fri 8:30am-5:00pm
Sat-Sun BY APPOINTMENT



STANDARD FEATURES

Elko, NV - by Bailey Homes

A great starter home with so many options.

The perfect starter home in Elko, NV. This smart design features an open layout with a large great room, kitchen and island. The master suite includes an executive bath with jetted tub and large tiled shower. Add a bonus room over the garage for a 4th bedroom and extra family room or a large 2nd family room. Expect all the same standard luxury features included in every Bailey home.

EXTERIOR

- Full stucco front with stone accents
- No maintenance vinyl siding (sides & back)
- 30 year architectural shingles
- Rain gutters & downspouts
- Covered front porch

GREAT ROOM

- Large open design, perfect for entertaining
- Engineered hardwood floors
- Ceiling fan & light combo

MASTER SUITE

- Walk-in closet
- Ceiling fan & light combo
- Spacious jetted tub with tile surround
- Walk-in shower with tile walls
- Birchwood vanity cabinet with dovetail drawers
- Granite countertops

BATHROOMS

- Birchwood vanity cabinet with dovetail drawers
- Soft close drawers
- Granite countertops
- Tile floors
- Moen faucets

KITCHEN & DINING

- Birchwood articulated cabinets with crown mould
- Soft close drawers
- Granite countertops with full tile backsplash
- Large kitchen bar
- Energy Star stainless steel appliances
- Engineered hardwood or tile floors
- Moen faucets

ENERGY EFFICIENT DESIGN

- Heavy duty insulation
- 1" thick insulated LOW-E glass windows
- Insulated crawl-space foundation or basement

GARAGE

- Extra large 2 or 3 car garage
- Sheetrocked & Insulated
- Garage door openers with digital keyless security pad

OTHER

- Bailey Homes 10 Year Warranty
- Central air conditioning
- Propane Furnace

