

# THE CEDAR HOME (WITH BASEMENT)

3-6 bed | 2-3 bath | 2 car | from \$264,780  
Spring Creek, NV - by Bailey Homes



## MAIN LEVEL 1,430 SF



<b>MAIN</b>	1,430 SF
<b>BASEMENT</b>	1,430 SF
<b>TOTAL</b>	2,860 SF
<b>UNFINISHED</b>	<b>\$264,780</b>
<b>FINISHED</b>	<b>\$309,780</b>



# THE CEDAR HOME (WITH BASEMENT)

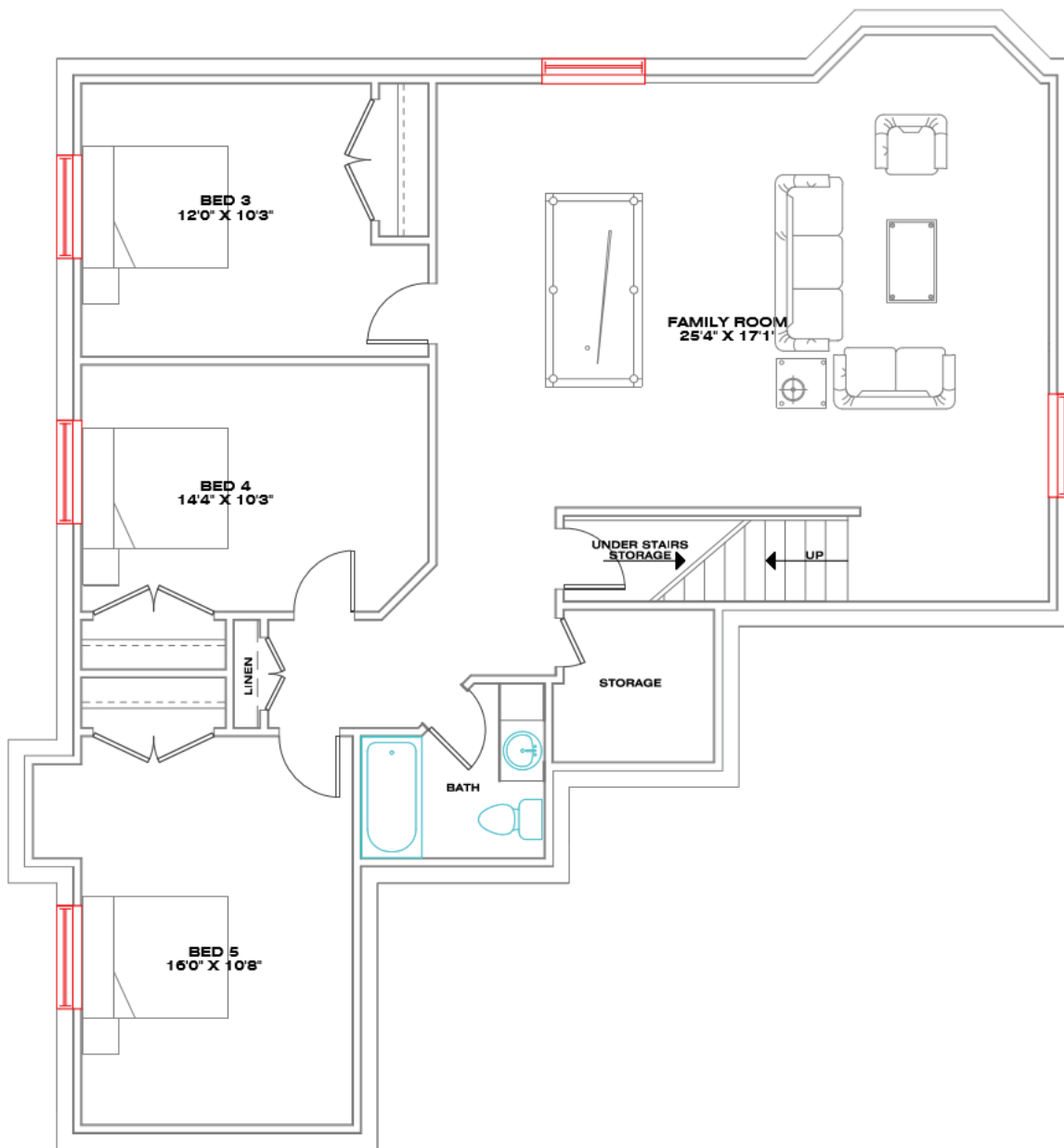
3-6 bed | 2-3 bath | 2 car | from \$264,780

Spring Creek, NV - by Bailey Homes



## BASEMENT LEVEL

1,430 SF



MAIN	1,430 SF
BASEMENT	1,430 SF
TOTAL	2,860 SF
UNFINISHED	<b>\$264,780</b>
FINISHED	<b>\$309,780</b>

Bailey Homes  
NV Lic 80318

775-777-7773  
info@newhomeselko.com

780 W. Silver St. #104  
Elko, NV 89801

Mon-Fri 8:30am-5:00pm  
Sat-Sun BY APPOINTMENT



# STANDARD FEATURES

Spring Creek, NV - by Bailey Homes

## A great starter home with so many options.

The perfect starter home in Spring Creek, NV. This smart design features an open layout with a large great room, kitchen and island. The master suite includes an executive bath with jetted tub and large tiled shower. Add a bonus room over the garage for a 4th bedroom and extra family room or a large 2nd family room. Expect all the same standard luxury features included in every Bailey home.

### EXTERIOR

- Full upgraded vinyl siding with stone accents
- 30 year architectural shingles
- Rain gutters & downspouts
- Covered front porch

### GREAT ROOM

- Large open design, perfect for entertaining
- Ceiling fan & light combo

### MASTER SUITE

- Large master bedroom
- Large walk-in closet
- Ceiling fan & light combo
- Spacious jetted tub with tile surround
- Separate shower
- Birchwood vanity cabinet with dovetail drawers
- Granite countertops

### BATHROOMS

- Birchwood vanity cabinet with dovetail drawers
- Soft close drawers
- Granite countertops
- Tile floors
- Moen faucets

### KITCHEN & DINING

- Birchwood articulated cabinets with crown mould
- Soft close drawers
- Granite countertops with full tile backsplash
- Large kitchen bar
- Energy Star stainless steel appliances
- Engineered hardwood or tile floors
- Moen faucets

### ENERGY EFFICIENT DESIGN

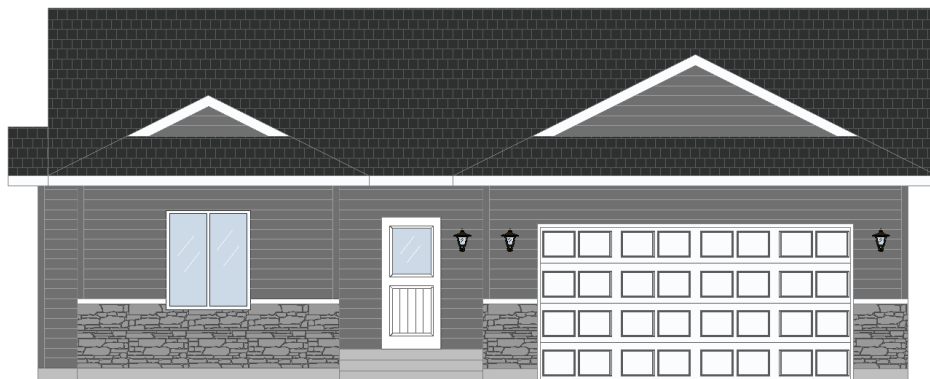
- Heavy duty insulation
- 1" thick insulated LOW-E glass windows
- Insulated crawl-space foundation or basement

### GARAGE

- Extra large 3 car garage
- Sheetrocked & Insulated
- Garage door openers with digital keyless security pad

### OTHER

- Bailey Homes 10 Year Warranty
- Central air conditioning
- Propane Furnace



Bailey Homes  
NV Lic 80318



775-777-7773  
info@newhomeselko.com



780 W. Silver St. #104  
Elko, NV 89801



Mon-Fri 8:30am-5:00pm  
Sat-Sun BY APPOINTMENT

